



CRRT/4-401-LG270-0,75-230/400~3-RS-304T-IE2

Direct coupled, single inlet centrifugal fan. Manufactured from **steel sheet protected with anti-corrosion polyester paint coating**. **Backward curved impeller** made of pre-galvanized sheet steel, dynamically balanced. Designed to continuously circulate air from -10°C up to 120°C, high temperature versions up to 250°C, for L versions maximum temperature 200°C (R versions with cooling impeller). Suitable for transporting clean air. LG-270 standard orientation. 2, 4 or 6 pole motors, **IE 2** high efficiency, three-phase 230/400V 50Hz up to 3kW and 400/690V 50Hz for higher powers. **IP 55, Class F** protection.

Brand S&P model CRRT/4-401-LG270-0,75-230/400~3-RS-304T-IE2 for an airflow 3.121 m³/h and static pressure 433 Pa.

Theoretical Working Point

Airflow	3.000 m ³ /h
Static Pressure	400 Pa
Temperature	20 °C
Altitude	0 m
Density	1,2 kg/m ³
Frequency	50 Hz
Voltage	230/400~3

Working Point

Airflow	3.121 m ³ /h
Static Pressure	433 Pa
Dynamic pressure	36,1 Pa
Total Pressure	469 Pa
Input power	0,653 kW
Tot efficiency	78,3 %
Shaft power	0,519 kW
St Efficiency	72,3 %
Outlet speed	7,7 m/s
Inlet speed	6,9 m/s
Fan speed	1410 rpm
Specific Fan Power	0,75 W/l/s

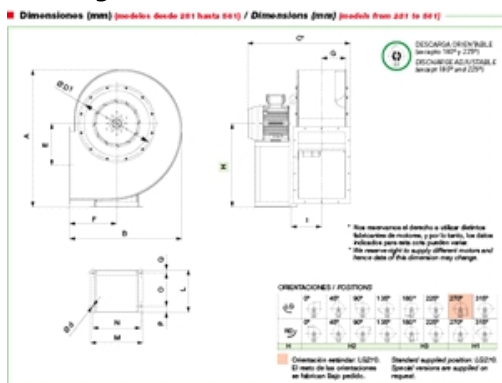
Construction

Diameter	401 mm
Fan size	401

Motor Characteristics

Number of poles	4
Motor Power	0,75
Voltage	230/400~3
Maximum absorbed current	2,8 A / 1,6 A
IP Rating	IP55
Motor insulation class	F
Starting Current	6

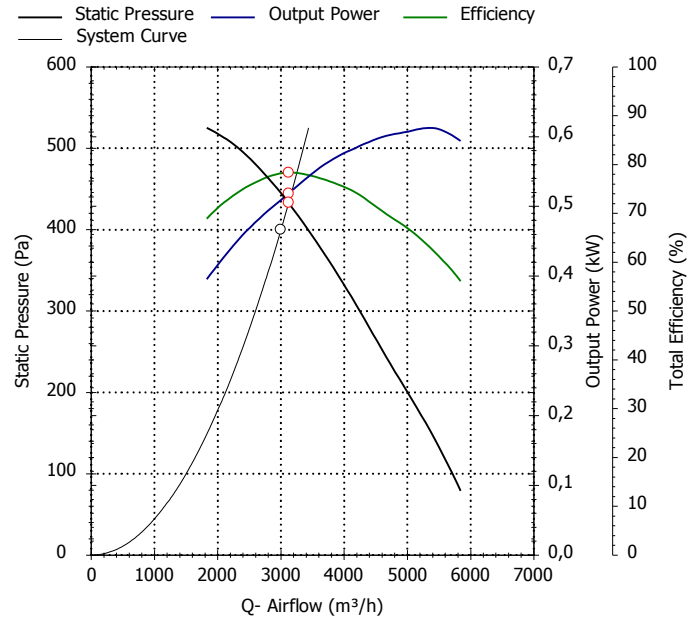
Drawing

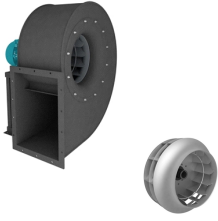


A	B	C	E	F	G	H1	H2	H3	I
829	694	562	250	300	146	500	500	300	196
L	M	N	O	P	Q	ød	C_HT	Q_HT	
190	235	215	125	50	15	10	602	55	

L_HT
230

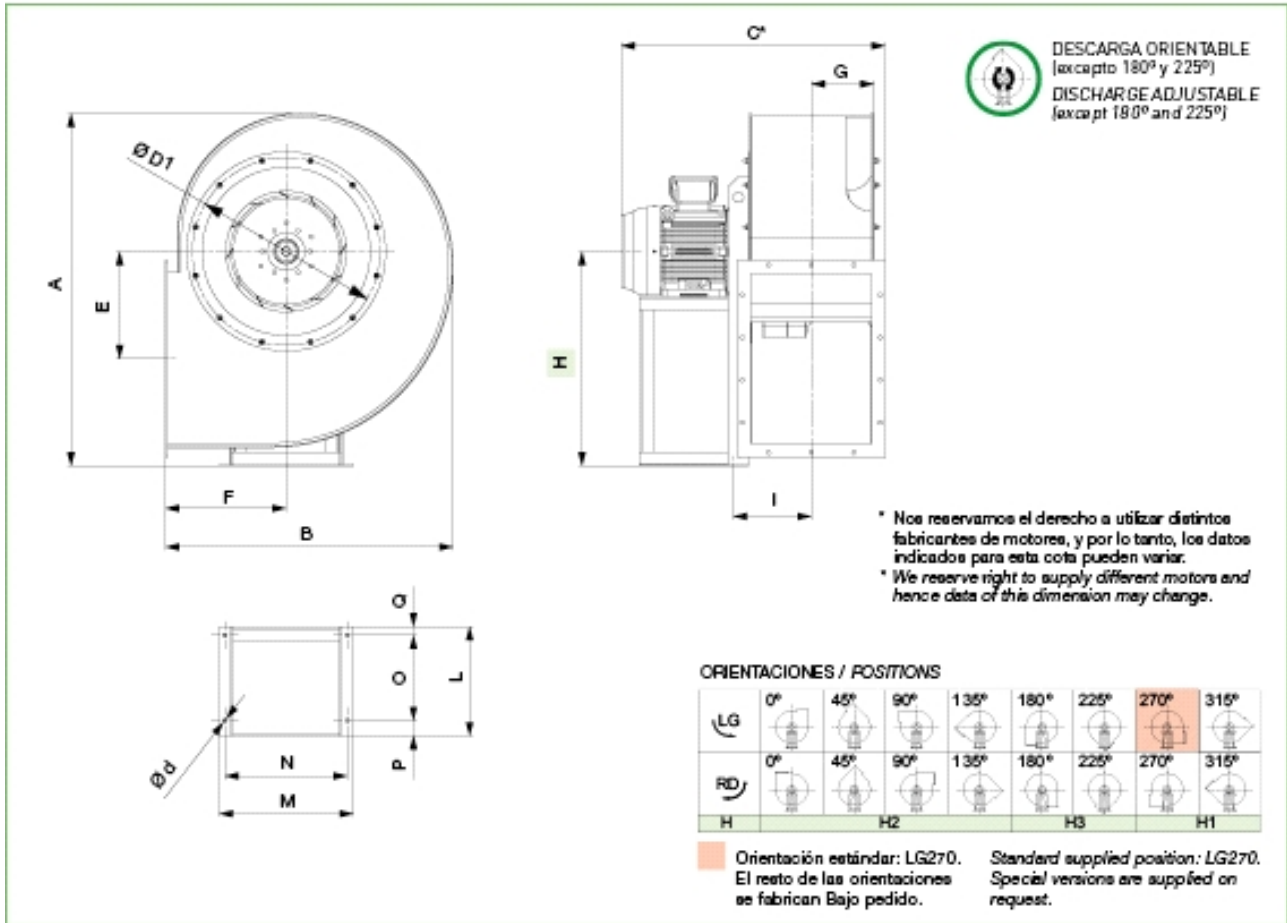
Performance Chart



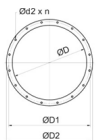


Drawing

Dimensiones (mm) (modelos desde 281 hasta 561) / Dimensions (mm) (models from 281 to 561)

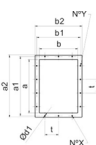


A	B	C	E	F	G	H1	H2	H3	I	L	M	N	O	P
829	694	562	250	300	146	500	500	300	196	190	235	215	125	50
Q	ød	C_HT	Q_HT	L_HT										
15	10	602	55	230										



Inlet flange

N	øD	øD1	øD2	ø_d2
12	405	448	485	11



Outlet flange

A	B	T	a1	a2	b1	b2	N°X	N°Y	øD1
400	280	125	448	480	332	360	3	4	11.5